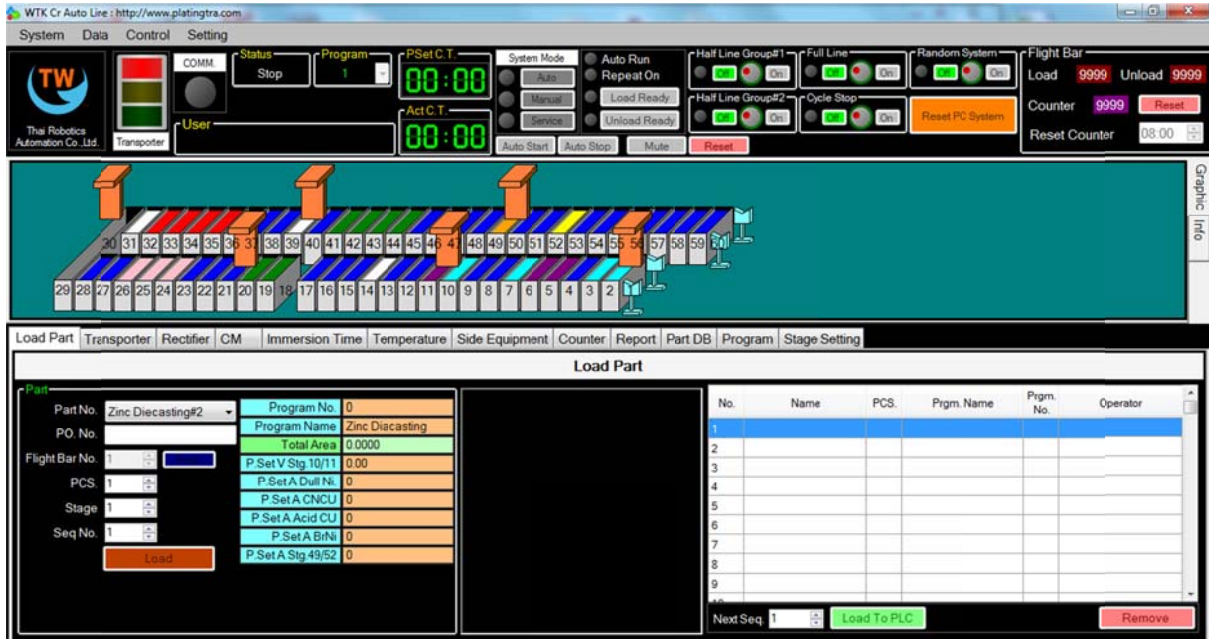


Standard function of MOS software

1. MAIN OPERATION SCREEN



FUNCTION

- A. Machine mode select (AUTO/MANUAL/SERVICE).
- B. Machine status (Transporter alarm, Side equipment alarm, Actual cycle time, Flight bar count, Machine communication).
- C. Operation TAP, Loading TAP use to load part information to machine (The parts information customer can design what information needed).

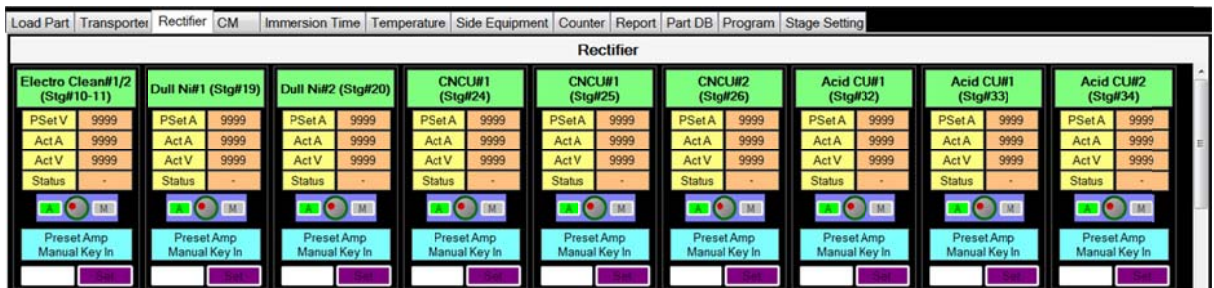
2. TRANSPORTER CONTROL



FUNCTION

- A. This screen use for control transporter and monitor transporter status.
 1. Address of transporter.
 2. Destination of transporter.
 3. Step running of transporter.
 4. Push bottom for control transporter.
 5. Fault alarm and Fault code.

3. RECTIFIER



FUNCTION

- A. This screen use for monitor rectifier value and control rectifier.
 1. Monitor Preset Amp/Volte.
 2. Monitor Actual Amp/Volte.
 3. Switch Manual/Auto Mode.
 4. Fault code.
 5. Direct preset value key in.

4. CHEMICAL MAINTENANCE

Load Part	Transporter	Rectifier	CM	Immersion Time	Temperature	Side Equipment	Counter	Report	Part DB	Program	Stage Setting
Chemical Maintenance											
				Preset Dosing Amp Hour	Actual Dosing Amp Hour	Acc. Amp Hour	Preset Dosing Time	Actual Dosing Time	Control		
Dull Ni#1 (Stg#19)			Set	9999	99999999	Reset	9999	Set	9999		
Dull Ni#2 (Stg#20)			Set	9999	99999999	Reset	9999	Set	9999		
CNCU#1 (Stg#24-25)			Set	9999	99999999	Reset	9999	Set	9999		
CNCU#2 (Stg#26)			Set	9999	99999999	Reset	9999	Set	9999		
Acid CU#1 (Stg#32-33)			Set	9999	99999999	Reset	9999	Set	9999		
Acid CU#2 (Stg#34-35)			Set	9999	99999999	Reset	9999	Set	9999		
BrNi#1 (Stg#41-42)			Set	9999	99999999	Reset	9999	Set	9999		

Dosing Pump											
	Run	LL		Run	LL		Run	LL		Run	LL
Dull Ni#1 (Stg#19)			CNCU#1 (Stg#24-25)			Acid CU#1 (Stg#32-33)			BrNi#1 (Stg#41-42)		
Dull Ni#2 (Stg#20)			CNCU#2 (Stg#26)			Acid CU#2 (Stg#34-35)			BrNi#2 (Stg#43-44)		
			CNCU#3 (Stg#24-25)			Acid CU#3 (Stg#32-33)			BrNi#3 (Stg#41-42)		

FUNCTION

- A. This screen use for control Auto dosing pump for maintenance chemical in each tank.
 1. Preset amp hour for plating tank chemical maintenance.
 2. Preset bar count or production area for other chemical tank.
 3. Preset dosing time for control dosing pump.
 4. Dosing status.
 5. Switch for control Dosing pump Auto/Manual.
 6. Level of chemical storage chemical tank.

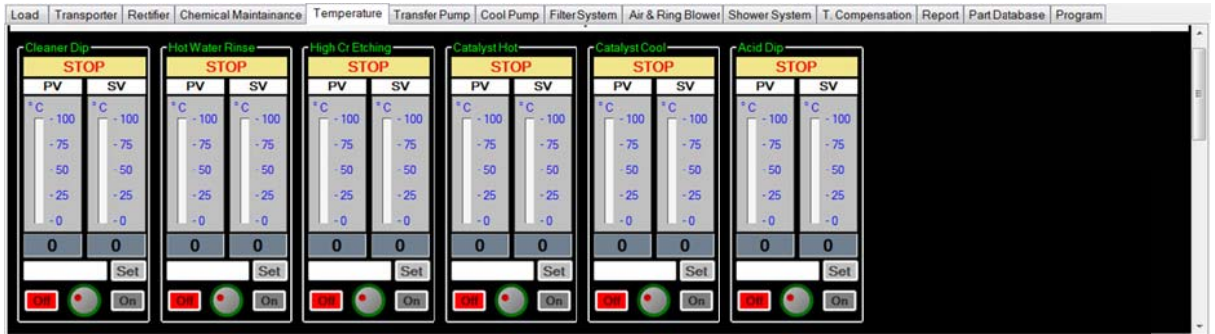
5. IMMERSION TIME

Load Part	Transporter	Rectifier	CM	Immersion Time	Temperature	Side Equipment	Counter	Report	Part DB	Program	Stage Setting
Actual Immersion Time (Sec.)											
Load (Stg#1)	99.99	Soak Clean#1 (Stg#2)	99.99	Soak Clean#1 (Stg#3)	99.99	CW Rinse (Stg#4)	99.99	Soak Clean#2 (Stg#5)	99.99		
Soak Clean#2 (Stg#6)	99.99	Ultrasonic (Stg#7)	99.99	CW Rinse (Stg#8)	99.99	CW Rinse (Stg#9)	99.99	Electro Clean#1 (Stg#10)	99.99		
Electro Clean#2 (Stg#11)	99.99	CW Rinse (Stg#12)	99.99	CW Rinse (Stg#13)	99.99	Conc Acid (Stg#14)	99.99	Conc Acid Drag Out (Stg#15)	99.99		
CW Rinse (Stg#16)	99.99	CW Rinse (Stg#17)	99.99	- (Stg#18)	99.99	Dull Ni#1 (Stg#19)	99.99	Dull Ni#2 (Stg#20)	99.99		
Dull Ni Drag Out (Stg#21)	99.99	CW Rinse (Stg#22)	99.99	CW Rinse (Stg#23)	99.99	CNCU#1 (Stg#24)	99.99	CNCU#1 (Stg#25)	99.99		
CNCU#2 (Stg#26)	99.99	CNCU Drag Out (Stg#27)	99.99	CW Rinse (Stg#28)	99.99	Shuttle#1 (Stg#29)	99.99	Shuttle#2 (Stg#30)	99.99		
Acid Dip#1 (Stg#31)	99.99	Acid CU#1 (Stg#32)	99.99	Acid CU#1 (Stg#33)	99.99	Acid CU#2 (Stg#34)	99.99	Acid CU#2 (Stg#35)	99.99		
Acid CU Drag Out (Stg#36)	99.99	CW Rinse (Stg#37)	99.99	CW Rinse (Stg#38)	99.99	Acid Dip#2 (Stg#39)	99.99	CW Rinse (Stg#40)	99.99		
BrNi#1 (Stg#41)	99.99	BrNi#1 (Stg#42)	99.99	BrNi#2 (Stg#43)	99.99	BrNi#2 (Stg#44)	99.99	BrNi Drag Out (Stg#45)	99.99		

FUNCTION

This screen show the actual immersion of each tank during it have product in tank.

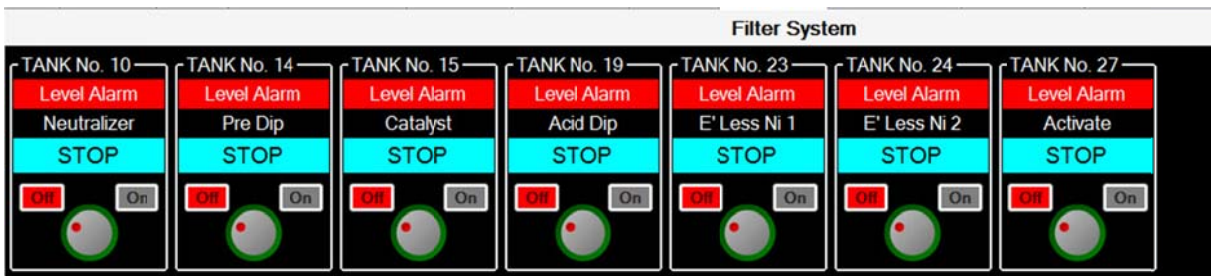
6. TEMPERATURE (Up to machine input if it have MOS can display)



FUNCTION

- A. This screen use for control temperature.
 1. Monitor Preset Temp./Actual Temp.
 2. Key in Preset Temp.
 3. Switch On/Of Temperature control.

7. SIDE EQUIPMENT (Up to machine input if it have MOS can display)

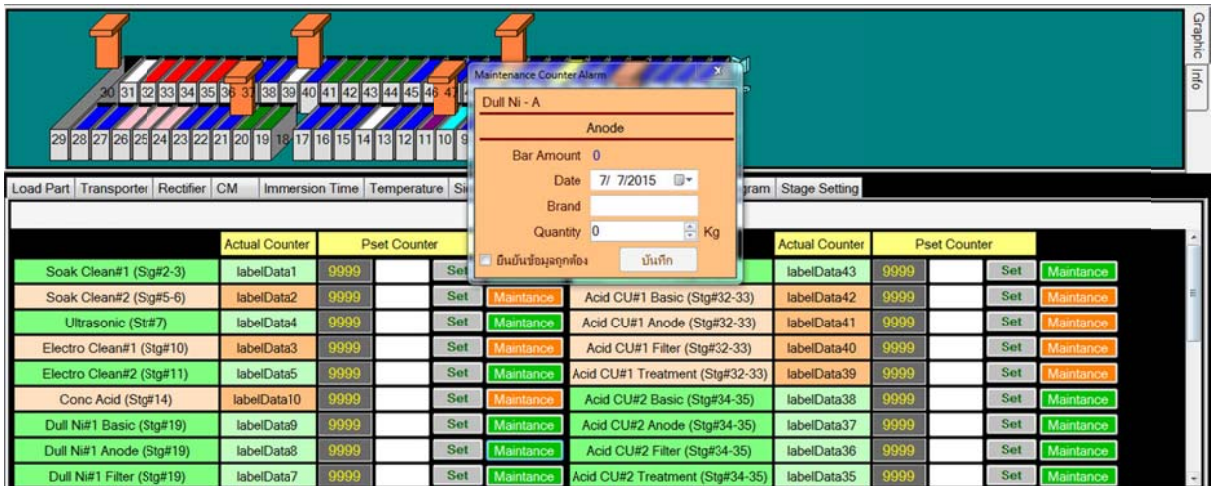


TANK No.		Flow	TANK No.		Transfer Pump	
6	Water Rinse - R1		5	H-Cr Etching		Overload
7	Water Rinse - R2		6	Water Rinse - R1		Overload
16	Water Rinse - R3		15	Catalyst		Overload
38	Water Rinse - R4		37	Semi Bright Ni		Overload
40	Water Rinse - R5		39	Sulfur Ni		Overload
42	Water Rinse - R6		41	Bright Ni		Overload

FUNCTION

- A. This Screen use for control side equipment (Filter pump, Circulation pump, Air blower, Weekly timer).

8. COUNTER FOR PRODUCTION MAINTENANCE (Up to machine input if it have MOS can display)



FUNCTION

- A. This screen use for production to maintenance machine such as.
 1. Change filter cartridge.
 2. Refill anode ball.
 3. Refill chemical.
 4. Print the request consumptions material.

9. REPORT

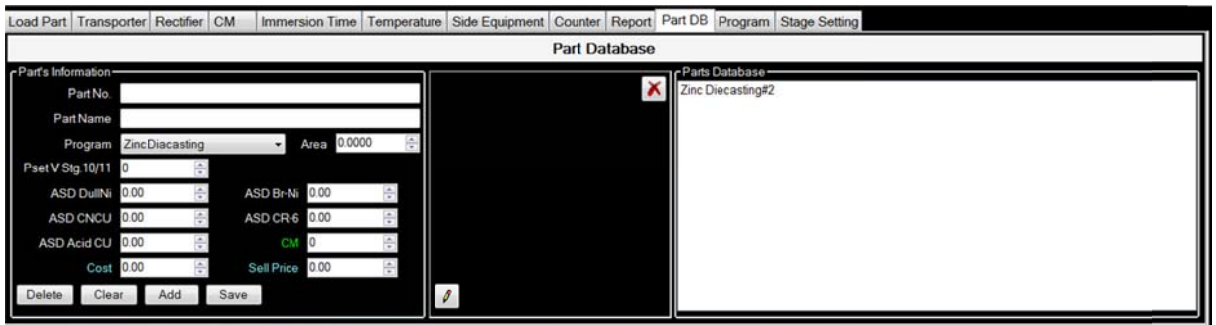


- A. This screen contents the production report. It will report machine condition during product pass each of process tank such as Actual temperature, actual amp-hour, plating tank.
- B. The sale report, this screen customer can see the sale price and production cost for each parts and it will show out profit.

- C. Maintenance report, this report record the production maintenance report it will show out the consumption of material.
- D. All report auto save in data base.



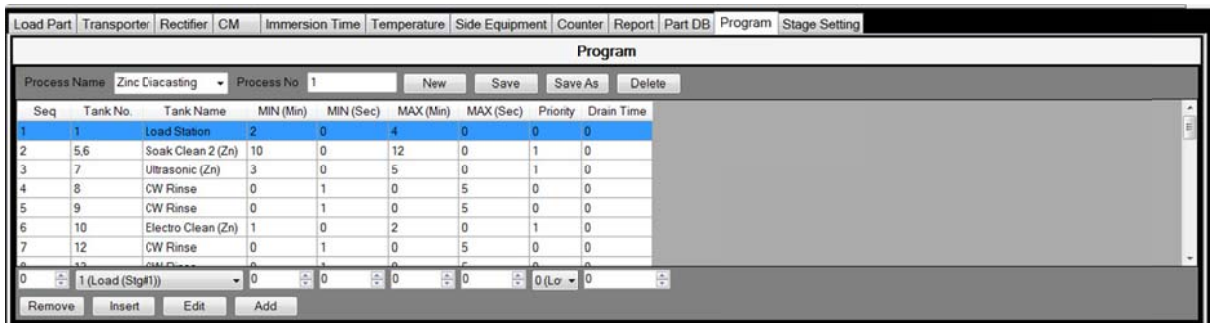
10. PART DATA BASE



FUNCTION

- A. This screen use for set up parts data for production running such as Current density, Part picture, Program to run this part.

11. Option PROCESS SETTING (Only for random loading system)



FUNCTION

- A. This screen only for “RANDOM LOADING SYSTEM”. It use for setting up process sequence, Immersion time for each tank, drain time and Priority.

12. Option TANK ENABLE/DISABLE (Only for random loading system)



FUNCTION

- A. This screen use for setting to use or no use of each tank.